

# Skytron

Stainless Comprehensive Catalog

# Table of Contents

Blanket & Fluid Warming Cabinets	2
Stainless Steel Sinks	10
Stainless Steel Tables	14
Stainless Steel Carts	20
Stainless Steel Stands	24
Other Stainless Steel Products	30
Magnetic Resonance Compatible Products	34
Stainless Steel Storage Cabinets	40



## Blanket & Fluid Warming Cabinets

Accelerate patient recovery time and reduce surgical site infections by maintaining normothermia from admission to discharge. Designed to thoroughly heat and maintain IV fluids, irrigation fluids, and blankets to healthcare or manufacturer temperature guidelines, Skytron's broad range of warming cabinet configurations also meet storage, space, and application requirements throughout a facility.

Simplify tasks and enhance convenience with choices of remote temperature monitoring, touch screen control, or glass doors for visualization. Our touchscreen option offers unparalleled technology by allowing remote connectivity to a warmer (via computer or smartphone app) and giving you control of a warmer wherever you are. The cabinets are available in single and dual-chamber units.

# Warming Cabinets

Skytron Blanket & Fluid Warming Cabinets provide independent, digitally controlled heating chambers that offer actual temperature and set point displays. Data is recorded every 30 minutes and stored for up to two years.



Standard Model



Optional Glass Door and Touch Screen



The Ethernet option offers unparalleled technology by allowing remote connectivity to your warmer (via computer or smart phone app) and giving you control of your warmer wherever you are.



Dual Chamber Header Control (Standard)



Header Control For Touch Screen Option

## Standard Features

- Easy Log integrated data logger with removable USB
- Keyed door lock for single & upper chamber units
- Leveling feet
- Automatically records data every 30 minutes
- Internal storage up to 2 years
- Displays actual temperature and set points at all times
- Independent digitally controlled heating chambers
- Rapid warm time (2-6 hours depending on load)
- Keyed temperature lock out
- Push button digital operation
- Large dual digital displays
- Fully insulated to provide uniform heating
- Audible & visual over-temp alarm

## Optional Features

- Left hand door hinge
- Mobile base or stand
- 220/240V power supply
- CuVerro® antimicrobial copper handle
- Celsius display
- Two (2) recessed unit options
- Seismic braces
- Pass through chamber
- Roll out basket(s) with cool touch handles
- Sloped top
- Keyed door lock for lower chamber units
- Electronic keypad lock
- Touch screen control
  - FDA compliant data logging with digital signatures
  - View live trends
  - Alarm logging (text or email)
  - Multi-level user security
  - Operator audit trail
  - Built in Ethernet
  - Smart phone/device access
    - Remote monitoring & control (VNC)
    - Remote tech support & diagnostics
    - Text and e-mail alarm notifications
    - File transfer via USB or FTP web page



# Warming Cabinets



## Single Chamber Units

\*All images shown include optional glass door and touchscreen display

### W1-252427

#### Overall Dimensions

24.5"H x 24" W x 26.5" D  
(622.3mm x 609.6mm x 673.1mm)  
1 Adjustable Shelf

#### Chamber I.D.

15.25"H x 20" W x 23" D  
(387.3mm x 508mm x 584.2mm)  
4.06 Cubic Feet Storage  
Temperature Range 90°-160° F (Tolerance +/- 1° F)

#### Electrical

120V, 6.3 Amp, 50/60 Hz, .45 kWh (Avg.),  
1535 BTU/hr (Avg.)

#### Approximate Capacity

9 Blankets or 12 Solution Bottles (1 Liter Each)



### W1-252421

#### Overall Dimensions

24.5"H x 24" W x 20.5" D  
(622.3mm x 609.6mm x 520.7mm)  
Optional Adjustable Shelf

#### Chamber I.D.

15.25"H x 20" W x 17" D  
(387.3mm x 508mm x 431.8mm)  
3.0 Cubic Feet Storage  
Temperature Range 90°-160° F (Tolerance +/- 1° F)

#### Electrical

120V, 2.9 Amp, 50/60 Hz, .23 kWh (Avg.),  
785 BTU/hr (Avg.)

#### Approximate Capacity

9 Blankets or 8 Solution Bottles (1 Liter Each)



### W1-253021

#### Overall Dimensions

24.5"H x 30" W x 20.5" D  
(622.3mm x 762mm x 520.7mm)  
1 Adjustable Shelf

#### Chamber I.D.

15.25"H x 26" W x 17" D  
(387.33mm x 660.4mm x 431.8mm)  
3.9 Cubic Feet Storage  
Temperature Range 90°-160° F (Tolerance +/- 1° F)

#### Electrical

120V, 5.7 Amp, 50/60 Hz, .45 kWh (Avg.),  
1535 BTU/hr (Avg.)

#### Approximate Capacity

18 Blankets or 8 Solution Bottles (1 Liter Each)



### W1-253027

#### Overall Dimensions

24.5"H x 30" W x 26.5" D  
(622.3mm x 762mm x 673.1mm)  
1 Adjustable Shelf

#### Chamber I.D.

15.25"H x 26" W x 23" D  
(387.33mm x 660.4mm x 584.2mm)  
5.27 Cubic Feet Storage  
Temperature Range 90°-160° F (Tolerance +/- 1° F)

#### Electrical

120V, 6.3 Amp, 50/60 Hz, .45 kWh (Avg.),  
1535 BTU/hr (Avg.)

#### Approximate Capacity

18 Blankets or 20 Solution Bottles (1 Liter Each)



### W1-362421

#### Overall Dimensions

36"H x 24" W x 20.5" D  
(914.44mm x 609.6mm x 520.7mm)  
2 Adjustable Shelves

#### Chamber I.D.

25"H x 20" W x 17" D  
(635mm x 508mm x 431.8mm)  
5 Cubic Feet Storage  
Temperature Range 90°-160° F (Tolerance +/- 2° F)

#### Electrical

120V, 5.7 Amp, 50/60 Hz, .23 kWh (Avg.),  
785 BTU/hr (Avg.)

#### Approximate Capacity

16 Blankets or 20 Solution Bottles (1 Liter Each)



# Warming Cabinets

## Single Chamber Units

\*All images shown include optional glass door and touchscreen display

### W1-362427

#### Overall Dimensions

36"H x 24"W x 26.5"D  
(914.4mm x 609.6mm x 673.1mm)  
2 Adjustable Shelves

#### Chamber I.D.

25"H x 20"W x 23"D  
(635mm x 508mm x 584.2mm)  
6.7 Cubic Feet Storage  
Temperature Range 90°-160° F (Tolerance +/- 2° F)

#### Electrical

120V, 6.3 Amp, 50/60 Hz, .45 kWh (Avg.),  
1535 BTU/hr (Avg.)

#### Approximate Capacity

16 Blankets or 25 Solution Bottles (1 Liter Each)



2" base (2B) standard for this model

### W1-363021

#### Overall Dimensions

36"H x 30"W x 20.5"D  
(914.4mm x 762mm x 520.7mm)  
2 Adjustable Shelves

#### Chamber I.D.

25"H x 26"W x 17"D  
(635mm x 660.4mm x 431.8mm)  
6.39 Cubic Feet Storage  
Temperature Range 90°-160° F (Tolerance +/- 2° F)

#### Electrical

120V, 5.7 Amp, 50/60 Hz, .45 kWh (Avg.),  
1535 BTU/hr (Avg.)

#### Approximate Capacity

32 Blankets or 36 Solution Bottles (1 Liter Each)



2" base (2B) standard for this model

### W1-363027

#### Overall Dimensions

36"H x 30"W x 26.5"D  
(914.4mm x 762mm x 673.1mm)  
2 Adjustable Shelves

#### Chamber I.D.

25"H x 26"W x 23"D  
(635mm x 660.4mm x 584.2mm)  
8.65 Cubic Feet Storage  
Temperature Range 90°-160° F (Tolerance +/- 2° F)

#### Electrical

120V, 6.3 Amp, 50/60 Hz, .45 kWh (Avg.),  
1535 BTU/hr (Avg.)

#### Approximate Capacity

32 Blankets or 40 Solution Bottles (1 Liter Each)



2" base (2B) standard for this model

### W1-652421

#### Overall Dimensions

64.75"H x 24"W x 20.5"D  
(1645mm x 609.6mm x 520.7mm)  
3 Adjustable Shelves

#### Chamber I.D.

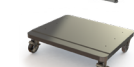
49.5"H x 20"W x 17"D  
(1257mm x 508mm x 431.8mm)  
9.74 Cubic Feet Storage  
Temperature Range 90°-160° F (Tolerance +/- 1° F)

#### Electrical

120V, 6.5 Amp, 50/60 Hz, .47 kWh (Avg.),  
1604 BTU/hr (Avg.)

#### Approximate Capacity

32 Blankets or 48 Solution Bottles (1 Liter Each)



Mobile Base (sold separately)

Roll Out Basket (sold separately)

4" base (4B) standard for this model

### W1-652427

#### Overall Dimensions

64.75"H x 24"W x 26.5"D  
(1645mm x 609.6mm x 673.1mm)  
3 Adjustable Shelves

#### Chamber I.D.

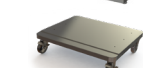
51"H x 20"W x 23"D  
(1295mm x 508mm x 584.2mm)  
13.60 Cubic Feet Storage  
Temperature Range 90°-160° F (Tolerance +/- 3° F)

#### Electrical

120V, 6.5 Amp, 50/60 Hz, .41 kWh (Avg.),  
1604 BTU/hr (Avg.)

#### Approximate Capacity

80 Blankets or 120 Solution Bottles (1 Liter Each)



Mobile Base (sold separately)

Roll Out Basket (sold separately)

4" base (4B) standard for this model

### W1-653021

#### Overall Dimensions

64.75"H x 30"W x 20.5"D  
(1645mm x 762mm x 520.7mm)  
3 Adjustable Shelves

#### Chamber I.D.

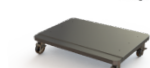
51"H x 26"W x 17"D  
(1295mm x 660.4mm x 431.8mm)  
13.05 Cubic Feet Storage  
Temperature Range 90°-160° F (Tolerance +/- 3° F)

#### Electrical

120V, 6.3 Amp, 50/60 Hz, .41 kWh (Avg.),  
1400 BTU/hr (Avg.)

#### Approximate Capacity

66 Blankets or 72 Solution Bottles (1 Liter Each)



Mobile Base (sold separately)

Roll Out Basket (sold separately)

4" base (4B) standard for this model

# Warming Cabinets

## Single Chamber Units

\*All images shown include optional glass door and touchscreen display

### W1-653027

#### Overall Dimensions

64.75"H x 30"W x 26.5"D  
(1645mm x 762mm x 673.1mm)  
3 Adjustable Shelves

#### Chamber I.D.

51"H x 26"W x 23"D  
(1295mm x 660.4mm x 584.2mm)  
17.65 Cubic Feet Storage  
Temperature Range 90°-160° F (Tolerance +/- 3° F)

#### Electrical

120V, 6.5 Amp, 50/60 Hz, .41 kWh (Avg.),  
1604 BTU/hr (Avg.)

#### Approximate Capacity

80 Blankets or 120 Solution Bottles (1 Liter Each)



**MB2430**  
Mobile Base  
(sold separately)

**WB2430**  
Roll Out Basket  
(sold separately)

4" base (4B) standard for this model

### W1-752421

#### Overall Dimensions

74.5"H x 24"W x 20.5"D  
(1892mm x 609.6mm x 520.7mm)  
2 Adjustable Shelves, 1 Fixed Shelf

#### Chamber I.D.

61"H x 20"W x 17"D  
(1549mm x 508mm x 431.8mm)  
12 Cubic Feet Storage  
Temperature Range 90°-160° F (Tolerance +/- 3° F)

#### Electrical

120V, 6.5 Amp, 50/60 Hz, .47 kWh (Avg.),  
1604 BTU/hr (Avg.)

#### Approximate Capacity

32 Blankets or 60 Solution Bottles (1 Liter Each)



**MB1824**  
Mobile Base  
(sold separately)

**WB1824**  
Roll Out Basket  
(sold separately)

4" base (4B) standard for this model

### W1-752427

#### Overall Dimensions

74.5"H x 24"W x 26.5"D  
(1892mm x 609.6mm x 673.1mm)  
2 Adjustable Shelves, 1 Fixed Shelf

#### Chamber I.D.

61"H x 20"W x 23"D  
(1549mm x 508mm x 584.2mm)  
16.24 Cubic Feet Storage  
Temperature Range 90°-160° F (Tolerance +/- 3° F)

#### Electrical

120V, 6.5 Amp, 50/60 Hz, .47 kWh (Avg.),  
1604 BTU/hr (Avg.)

#### Approximate Capacity

80 Blankets or 120 Solution Bottles (1 Liter Each)



**MB2424**  
Mobile Base  
(sold separately)

**WB2424**  
Roll Out Basket  
(sold separately)

4" base (4B) standard for this model

### W1-753021

#### Overall Dimensions

74.5"H x 30"W x 20.5"D  
(1892mm x 762mm x 520.7mm)  
2 Adjustable Shelves, 1 Fixed Shelf

#### Chamber I.D.

61"H x 26"W x 17"D  
(1549mm x 660.4mm x 431.8mm)  
15.60 Cubic Feet Storage  
Temperature Range 90°-160° F (Tolerance +/- 3° F)

#### Electrical

120V, 6.5 Amp, 50/60 Hz, .47 kWh (Avg.),  
1604 BTU/hr (Avg.)

#### Approximate Capacity

80 Blankets or 72 Solution Bottles (1 Liter Each)



**MB1830**  
Mobile Base  
(sold separately)

**WB1830**  
Roll Out Basket  
(sold separately)

4" base (4B) standard for this model

### W1-753027

#### Overall Dimensions

74.5"H x 30"W x 26.5"D  
(1892mm x 762mm x 673.1mm)  
2 Adjustable Shelves, 1 Fixed Shelf

#### Chamber I.D.

61"H x 26"W x 23"D  
(1549mm x 660.4mm x 584.2mm)  
21.1 Cubic Feet Storage  
Temperature Range 90°-160° F (Tolerance +/- 3° F)

#### Electrical

120V, 6.5 Amp, 50/60 Hz, .47 kWh (Avg.),  
1604 BTU/hr (Avg.)

#### Approximate Capacity

80 Blankets or 120 Solution Bottles (1 Liter Each)



**MB2430**  
Mobile Base  
(sold separately)

**WB2430**  
Roll Out Basket  
(sold separately)

4" base (4B) standard for this model

# Warming Cabinets

## Dual Chamber Units

\*All images shown include optional glass door and touchscreen display

### W2-652421

#### Overall Dimensions

64.75"H x 24"W x 20.5"D  
(1645mm x 609.6mm x 520.7mm)  
7.47 Cubic Feet Storage, 3 Adjustable Shelves

#### Upper Chamber I.D.

13.5"H x 20"W x 17"D  
(342.9mm x 508mm x 431.8mm)  
2.65 Cubic Feet Storage  
Temperature Range 90°-160° F (Tolerance +/- 1° F)

#### Lower Chamber I.D.

24.5"H x 20"W x 17"D  
(622.3mm x 508mm x 431.8mm)  
4.82 Cubic Feet Storage  
Temperature Range 90°-160° F (Tolerance +/- 2° F)

#### Electrical

120V, 8.9 Amp, 50/60 Hz, .65 kWh (Avg.),  
2218 BTU/hr (Avg.)

#### Approximate Capacity

26 Blankets or 36 Solution Bottles (1 Liter Each)



**MB1824**  
Mobile Base  
(sold separately)



**WB1824**  
Roll Out Basket  
(sold separately)

4" base (48) standard for this model

### W2-652427

#### Overall Dimensions

64.75"H x 24"W x 26.5"D  
(1645mm x 609.6mm x 673.1mm)  
10.11 Cubic Feet Storage, 3 Adjustable Shelves

#### Upper Chamber I.D.

13.5"H x 20"W x 23"D  
(342.9mm x 508mm x 584.2mm)  
3.59 Cubic Feet Storage  
Temperature Range 90°-160° F (Tolerance +/- 2° F)

#### Lower Chamber I.D.

24.5"H x 20"W x 23"D  
(622.3mm x 508mm x 584.2mm)  
6.52 Cubic Feet Storage  
Temperature Range 90°-160° F (Tolerance +/- 2° F)

#### Electrical

120V, 8.3 Amp, 50/60 Hz, .60 kWh (Avg.),  
2047 BTU/hr (Avg.)

#### Approximate Capacity

52 Blankets or 80 Solution Bottles (1 Liter Each)



**MB2424**  
Mobile Base  
(sold separately)



**WB2424**  
Roll Out Basket  
(sold separately)

4" base (48) standard for this model

### W2-653021

#### Overall Dimensions

64.75"H x 30"W x 20.5"D  
(1645mm x 762mm x 520.7mm)  
9.72 Cubic Feet Storage, 3 Adjustable Shelves

#### Upper Chamber I.D.

13.5"H x 26"W x 17"D  
(342.9mm x 660.4mm x 431.8mm)  
3.45 Cubic Feet Storage  
Temperature Range 90°-160° F (Tolerance +/- 1° F)

#### Lower Chamber I.D.

24.5"H x 26"W x 17"D  
(622.3mm x 660.4mm x 431.8mm)  
6.27 Cubic Feet Storage  
Temperature Range 90°-160° F (Tolerance +/- 2° F)

#### Electrical

120V, 8.3 Amp, 50/60 Hz, .60 kWh (Avg.),  
2047 BTU/hr (Avg.)

#### Approximate Capacity

50 Blankets or 54 Solution Bottles (1 Liter Each)



**MB1830**  
Mobile Base  
(sold separately)



**WB1830**  
Roll Out Basket  
(sold separately)

4" base (48) standard for this model

### W2-653027

#### Overall Dimensions

64.75"H x 30"W x 26.5"D  
(1645mm x 762mm x 673.1mm)  
13.15 Cubic Feet Storage, 3 Adjustable Shelves

#### Upper Chamber I.D.

13.5"H x 26"W x 23"D  
(342.9mm x 660.4mm x 584.2mm)  
4.67 Cubic Feet Storage  
Temperature Range 90°-160° F (Tolerance +/- 2° F)

#### Lower Chamber I.D.

24.5"H x 26"W x 23"D  
(622.3mm x 660.4mm x 584.2mm)  
8.48 Cubic Feet Storage  
Temperature Range 90°-160° F (Tolerance +/- 2° F)

#### Electrical

120V, 8.9 Amp, 50/60 Hz, .65 kWh (Avg.),  
2218 BTU/hr (Avg.)

#### Approximate Capacity

52 Blankets or 96 Solution Bottles (1 Liter Each)



**MB2430**  
Mobile Base  
(sold separately)



**WB2430**  
Roll Out Basket  
(sold separately)

4" base (48) standard for this model

# Warming Cabinets

## Dual Chamber Units

\*All images shown include optional glass door and touchscreen display

### W2-752421

#### Overall Dimensions

74.5"H x 24" W x 20.5" D  
(1892mm x 609.6mm x 520.7mm)  
9.44 Cubic Feet Storage, 3 Adjustable Shelves

#### Upper Chamber I.D.

15.25"H x 20" W x 17" D  
(387.3mm x 508mm x 431.8mm)  
2.65 Cubic Feet Storage  
Temperature Range 90°-160° F (Tolerance +/- 1° F)

#### Lower Chamber I.D.

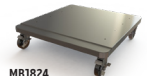
34.5"H x 20" W x 17" D  
(876.3mm x 508mm x 431.8mm)  
6.79 Cubic Feet Storage  
Temperature Range 90°-160° F (Tolerance +/- 3° F)

#### Electrical

120V, 8.9 Amp, 50/60 Hz, .65 kWh (Avg.),  
2218 BTU/hr (Avg.)

#### Approximate Capacity

32 Blankets or 48 Solution Bottles (1 Liter Each)



**MB1824**  
Mobile Base  
(sold separately)

**WB1824**  
Roll Out Basket  
(sold separately)

4" base (4B) standard for this model

### W2-752427

#### Overall Dimensions

74.5"H x 24" W x 26.5" D  
(1892mm x 609.6mm x 673.1mm)  
13.24 Cubic Feet Storage, 3 Adjustable Shelves

#### Upper Chamber I.D.

15.25"H x 20" W x 23" D  
(387.3mm x 508mm x 584.2mm)  
4.06 Cubic Feet Storage  
Temperature Range 90°-160° F (Tolerance +/- 1° F)

#### Lower Chamber I.D.

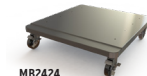
34.5"H x 20" W x 23" D  
(876.3mm x 508mm x 584.2mm)  
9.18 Cubic Feet Storage  
Temperature Range 90°-160° F (Tolerance +/- 3° F)

#### Electrical

120V, 8.9 Amp, 50/60 Hz, .65 kWh (Avg.),  
2218 BTU/hr (Avg.)

#### Approximate Capacity

52 Blankets or 80 Solution Bottles (1 Liter Each)



**MB2424**  
Mobile Base  
(sold separately)

**WB2424**  
Roll Out Basket  
(sold separately)

4" base (4B) standard for this model

### W2-753021

#### Overall Dimensions

74.5"H x 30" W x 20.5" D  
(1892mm x 762mm x 520.7mm)  
12.27 Cubic Feet Storage, 3 Adjustable Shelves

#### Upper Chamber I.D.

15.25"H x 26" W x 17" D  
(387.3mm x 660.4mm x 431.8mm)  
3.45 Cubic Feet Storage  
Temperature Range 90°-160° F (Tolerance +/- 1° F)

#### Lower Chamber I.D.

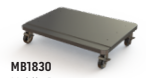
34.5"H x 26" W x 17" D  
(876.3mm x 660.4mm x 431.8mm)  
8.82 Cubic Feet Storage  
Temperature Range 90°-160° F (Tolerance +/- 2° F)

#### Electrical

120V, 8.3 Amp, 50/60 Hz, .82 kWh (Avg.),  
2047 BTU/hr (Avg.)

#### Approximate Capacity

52 Blankets or 72 Solution Bottles (1 Liter Each)



**MB1830**  
Mobile Base  
(sold separately)

**WB1830**  
Roll Out Basket  
(sold separately)

4" base (4B) standard for this model

### W2-753027

#### Overall Dimensions

74.5"H x 30" W x 26.5" D  
(1892mm x 762mm x 673.1mm)  
17.21 Cubic Feet Storage, 3 Adjustable Shelves

#### Upper Chamber I.D.

15.25"H x 26" W x 23" D  
(387.3mm x 660.4mm x 584.2mm)  
5.28 Cubic Feet Storage  
Temperature Range 90°-160° F (Tolerance +/- 1° F)

#### Lower Chamber I.D.

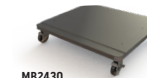
34.5"H x 26" W x 23" D  
(876.3mm x 660.4mm x 584.2mm)  
11.93 Cubic Feet Storage  
Temperature Range 90°-160° F (Tolerance +/- 3° F)

#### Electrical

120V, 12.5 Amp, 50/60 Hz, .90 kWh (Avg.),  
3071 BTU/hr (Avg.)

#### Approximate Capacity

52 Blankets or 120 Solution Bottles (1 Liter Each)



**MB2430**  
Mobile Base  
(sold separately)

**WB2430**  
Roll Out Basket  
(sold separately)

4" base (4B) standard for this model





## Configuration Options

Base Model #	Overall Dimensions	Chambers	Door Type	Door Hinge	Base Style	Other Options
W1-252421	24.5"H x 24" W x 20.5" D	Single	G = Glass Door	LH = Left Hinge	2B = 2" Base	220 = 220/240V Power Supply
W1-252427	24.5"H x 24" W x 26.5" D	Single	Stainless Steel Door (Standard)	Right Hinge (Standard)	4B = 4" Base	C = Celsius
W1-253021	24.5"H x 30" W x 20.5" D	Single			6B = 6" Base	CV = Cuverro Handle Option
W1-253027	24.5"H x 30" W x 26.5" D	Single			NB = No Base	R1 = Recessed Unit with Insulation Wrap, No Top Panel, No Side Panels, and No Trim Kit
W1-362421	36"H x 24" W x 20.5" D	Single			MB = Mobile Base	R2 = Recessed Unit with Top Panel, Side Panels, and Trim Kit
W1-362427	36"H x 24" W x 26.5" D	Single				SB = Seismic Braces
W1-363021	36"H x 30" W x 20.5" D	Single				WB = Roll Out Basket
W1-363027	36"H x 30" W x 26.5" D	Single				P = Pass Through Chamber
W1-652421	64.75"H x 24" W x 20.5" D	Single				TS = Touch Screen
W1-652427	64.75"H x 24" W x 26.5" D	Single				ST = Sloped Top
W1-653021	64.75"H x 30" W x 20.5" D	Single				LDL = Lower Chamber Door Lock
W1-653027	64.75"H x 30" W x 26.5" D	Single				EL = Electronic Keypad Lock (Only available for Single Chamber Units)
W1-752421	74.5"H x 24" W x 20.5" D	Single				
W1-752427	74.5"H x 24" W x 26.5" D	Single				
W1-753021	74.5"H x 30" W x 20.5" D	Single				
W1-753027	74.5"H x 30" W x 26.5" D	Single				
W2-652421	64.75"H x 24" W x 20.5" D	Dual				
W2-652427	64.75"H x 24" W x 26.5" D	Dual				
W2-653021	64.75"H x 30" W x 20.5" D	Dual				
W2-653027	64.75"H x 30" W x 26.5" D	Dual				
W2-752421	74.5"H x 24" W x 20.5" D	Dual				
W2-752427	74.5"H x 24" W x 26.5" D	Dual				
W2-753021	74.5"H x 30" W x 20.5" D	Dual				
W2-753027	74.5"H x 30" W x 26.5" D	Dual				

Note: Model # will change based on features added.

Note: Due to the vast number of configurations we have available, not all our models are shown. Please let us know your specific dimensions to get the model that will best suit your needs.





## Stainless Steel Sinks

Work hands-free with our standard knee-kick control on our stainless scrub sinks. Preset water temperatures are dispensed automatically and the aerator can be adjusted to provide either a stream or rosette spray. Skytron sinks are built to last with our high-quality stainless steel throughout the entire structure, reducing the risk of corrosion or deterioration overtime. This efficient design lengthens product life while lowering the total cost of ownership.

# Surgical Scrub Sinks

## SS-Series

The SS-Series is our premier line of surgical scrub sinks. These sinks combine the best material, components, and craftsmanship available on the market today.



### Standard Features

- Single, dual, or triple stations
- Deep sloping basin
- Adjustable thermostatic controlled pressure regulating mixing valve (one per model)
- Knee operated water
- Check stop strainers for ease of maintenance
- High mount swivel gooseneck spout with adjustable swivel spray aerator
- Flow control valve
- Back-flow preventers
- Splash screen dividers with double and triple station sinks
- Main support and Z-brackets (in-wall support optional)
- 304 stainless steel polished and ground to a #4 finish

### Optional Features

- Infrared operation
- Digital scrub timer
- Eye wash
- Blending valve (add onto eye wash option)
- Laminar flow
- 220/240V power supply
- Pedestal base
- In-wall support system (chair carrier)
- Over sink wall shelf
- Additional thermostatic mixing valve (per bay)
- Knee-operated soap
- Foot-operated soap



**Single Station**  
(Shown with multiple\*optional features)



**Dual Station**  
(Shown with multiple\*optional features)



**Triple Station**  
(Shown with multiple\*optional features)

### Utility Requirements

Utility	Connection On Unit	Pressure Range	Temperature	Consumption
Drain	1 1/2" x 6" Tail Piece	N/A	N/A	N/A
Cold Water	1/2" NPT	20-50 PSIG	70° F. Max	2 GPM Per Station
Hot Water	1/2" NPT	20-50 PSIG	180° F. Max	2 GPM Per Station
Electrical (IRM Units Only)	120V	N/A	N/A	N/A

# Surgical Scrub Sinks

## SS-Series Features



(Shown with multiple\*optional features)

## Recommended Optional Products

Base Model #	In-Wall Sink Carrier #	Shelf Over Sink #
SS2121-MK	F1-010-48-M	F1-010-72
SS2122-MK	F1-010-49-M	F1-010-73
SS2123-MK	F1-010-50-M	F1-010-74



F1-010-72



F1-010-73



F1-010-74

## How to Order SS-Series

Infrared Operation (per station)	Eye Wash	Thermostatic Mixing Valve	Laminar Flow	220/240V	Pedestal Base (per station)
IRM	EYE	TVM	F1-010-96	220	PB

Note: Model # will change based on features added.

# Processing Sinks

Ergonomically  
Friendly



## Standard Features

- Open pipe base
- Single, dual, or triple basins
- Fully welded construction with reinforced tops
- Right to left workflow or left to right workflow
- 37" standard height for stationary sinks
- 4" backsplash
- Under shelf
- Adjustable feet
- Etched gallon markings
- Basin size: 24"W x 17"L x 10"D
- Full CAD rendering of specified sink

## Optional Features

- Ergonomically friendly electronic adjustable height with four position programming
  - Electronic adjustable height range: 35"–42"
- Mixing valve faucet
- Pre-rinse faucet
- DI water faucet
- Air gun kit (with 5 tips)
- Water gun kit (with 8 tips)
- Eye wash
- Shut off valve for air/water guns
- Drain boards
- 6", 8", or 12" backsplash
- 4", 6", 8", or 12" Side splash
- Tubing manifold
- Hand lever drains
- Foot operated drains (not available for adjustable height units)
- Copper drain system (not compatible with deionized water)
- Overhead LED hood
- 17 x 30 x 10 sink upgrade

### PS2612037-9

(electronic adjustable height shown with left to right workflow and optional pre-rinse faucet, DI water, air gun, and water gun)



Note: ETL compliance for adjustable height models only.

## Standard Pipe Base Models (Stationary)

Base Model #	Overall Dimensions
PS267237-1	72"W x 26"D x 37" H, Single Basin
PS269637-1	96"W x 26"D x 37" H, Dual Basin
PS2612037-1	120"W x 26"D x 37" H, Triple Basin

## Standard Pipe Base Models (Electronic Adjustable Height)

Base Model #	Overall Dimensions
PS267237-9	72"W x 26"D x 37" H, Single Basin
PS269637-9	96"W x 26"D x 37" H, Dual Basin
PS2612037-9	120"W x 26"D x 37" H, Triple Basin





## Stainless Steel Tables

We understand that your equipment can take a lot of abuse, our stainless steel tables are designed to be durable and tough to take on everyday use. Our vast selection of stainless steel tables ranges from Instrument Tables, Utility Tables, Nested Tables, Work Tables, Space Saver Tables, Adjustable Over Operating Tables, Central Supply Tables, and Prep & Pack Workstations.

# Instrument Tables



**T0004**  
(shown with optional  
U brace & 3" locking casters)

## Standard Features

- Fully welded construction
- Reinforced tops
- Stainless steel legs  
(1 1/4" 16 gauge)
- Stainless steel top  
(16 gauge type 300 series)
- Stainless steel under shelf  
(18 gauge type 300 series)
- 2" swivel casters

## Optional Features

- 3" swivel casters
- Locking casters
- Drawers under all sizes
- Guard rails on 3 sides  
(available on top shelf)
- H or U brace instead of under shelf
- 1" lip on 3 sides (available on top)

## Standard Models

Base Model #	Overall Dimensions
T0001	20"W x 16"D x 34" H
T0002	30"W x 16"D x 34" H
T0003	36"W x 24"D x 34" H
T0004	48"W x 24"D x 34" H
T0005	60"W x 24"D x 34" H
T0006	72"W x 24"D x 34" H
T0049	48"W x 20"D x 34" H
T0053	30"W x 28"D x 34" H
T0054	72"W x 30"D x 34" H
T0058	36"W x 20"D x 34" H
T0059	60"W x 30"D x 34" H
T0088	33"W x 18"D x 34" H
T0101	36"W x 30"D x 34" H
T0115	20" W x 20" D x 34" H



**T0101**

# Work Tables



Ergonomically  
Friendly

**WT0003**  
(shown with optional manual adjustable height, H brace, and 5" swivel casters)

## Standard Features

- Fully welded construction
- Reinforced stainless steel top (16 gauge type 300 series)
- Stainless steel under shelf (18 gauge type 300 series)
- 2" square legs
- Added supports
- 5" casters (2 swivel, 2 locking)

## Optional Features

- **Ergonomically friendly** adjustable heights (manual or electronic)
  - Manual adjustable height range: 36"–55"
  - Electronic adjustable height range: 36"–43"
- Locking casters
- H or U brace instead of under shelf
- Drawers under all sizes
- Stainless steel guard rails (3 sides, top only)

## Standard Models

Base Model #	Overall Dimensions
WT0003	36" W x 24" D x 36" H
WT0004	48" W x 24" D x 36" H
WT0005	60" W x 24" D x 36" H
WT0054	72" W x 30" D x 36" H
WT0055	72" W x 36" D x 36" H
WT0059	60" W x 30" D x 36" H

# Space Saver Tables



Ergonomically  
Friendly

Fold down  
top shelf!

**TSPS-1000-6030**  
(shown with optional manual adjustable height)

## Standard Features

- Fold down top shelf with lip (space saving feature)
- One under shelf
- 2" square legs
- 4" casters

## Optional Features

- **Ergonomically friendly** adjustable heights (manual or electronic)
  - Manual adjustable height range: 36"–55"
  - Electronic adjustable height range: 36"–54"

## Standard Models

Base Model #	Overall Dimensions
TSPS-1000-6030	60" W x 30" D x 36" H
TSPS-1000-7230	72" W x 30" D x 36" H

# Utility Tables

## Standard Features

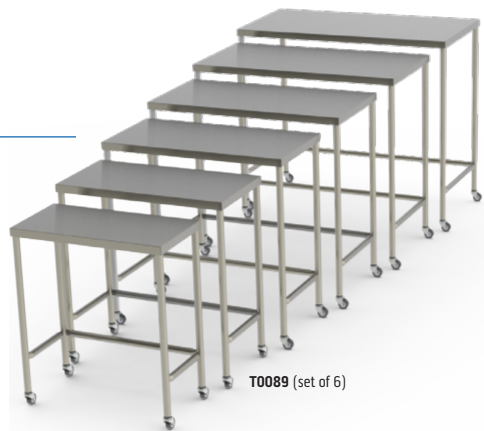
- Fully welded construction
- 1 under shelf
- Top guard rail (on 3 sides)
- 3" casters (2 swivel & 2 locking)



## Standard Models

Base Model #	Overall Dimensions	Drawers
T0086	20" W x 16" D x 34" H	1
T0077	20" W x 16" D x 34" H	2
T0096	20" W x 16" D x 34" H	3
T0097	20" W x 16" D x 34" H	4
T0902-3318-1D-GR	33" W x 18" D x 34" H	1
T0902-3318-2D-GR	33" W x 18" D x 34" H	2
T0902-3318-3D-GR	33" W x 18" D x 34" H	3

# Nested Tables



## Standard Models

Model #	Overall Dimensions
T0089	Set of 6 (T0090 through T0095)
T0090	48" W x 24" D x 42" H
T0091	44" W x 22" D x 40" H
T0092	40" W x 20" D x 38" H
T0093	36" W x 18" D x 36" H
T0094	32" W x 16" D x 34" H
T0095	28" W x 14" D x 32" H

## Standard Features

- Fully welded construction
- Stainless steel legs (1 1/4" 16 gauge)
- Stainless steel tops (16 gauge type 304)
- Stainless steel U brace (1 1/4" 16 gauge)
- 2" swivel casters

# Prep & Pack Workstations

Designed with ergonomics in mind, the Prep & Pack Workstation features a modular design, allowing for multiple configurations and adjustability for all body types. Choose from the many optional features including adjustable height (manual or electronic), overhead light, magnification light, CPU holder, electrical strip, and more.

## Standard Features

- 100% stainless steel construction
- Modular design allows for multiple configurations
- Integrated footrest
- Two 4" swivel casters and two 4" locking casters

## Optional Features

- **Ergonomically friendly** adjustable heights (manual or electronic)
  - Manual adjustable height range: 36"–44" (working surface)
  - Electronic adjustable height range: 36"–44" (working surface)
- Bin rail
- Overhead light
- Articulating magnification light
- Electrical strip
- CPU holder
- Pull out keyboard tray
- Magnetic dry erase board
- Adjustable flat shelf for riser frame
- Adjustable angled shelf for riser frame
- Lower shelf
- Spool holder
- Drawer boxes
  - Single 6" drawer box
  - Double 6" drawer box



Ergonomically  
Friendly

**TWS-3072**  
(shown with multiple optional features)

## Standard Models

Base Model #	Overall Dimensions (height at lowest setting)
TWS-3060	60" W x 32.25" D x 81" H
TWS-3072	72" W x 32.25" D x 81" H
TWS-3660	60" W x 38.25" D x 81" H
TWS-3672	72" W x 38.25" D x 81" H



# Adjustable Over Operating Tables

## Standard Features

- **Ergonomically friendly** manual adjustable height
  - Manual adjustable height range: 36.5"–48.25"
- 3" casters (2 swivel & 2 locking)



## Standard Models

Base Model #	Overall Dimensions (height at lowest setting)
T0082-3442	34" W x 42" D x 36.5" H
T0082-4824	48" W x 24" D x 36.5" H
T0082-6024	60" W x 24" D x 36.5" H

# Central Supply Tables

## Standard Features

- Heavy duty, stainless steel construction
- One under shelf
- 4" casters (2 swivel & 2 locking)

## Optional Features

- Sterile frame
- 6" plastic bin
- 10" plastic bin
- Drawer



## Standard Models

Base Model #	Overall Dimensions
CST3260	60" W x 32" D x 34" H
CST2472	72" W x 24" D x 34" H
CST3684	84" W x 36" D x 34" H



## Stainless Steel Carts

Make the transportation of multiple materials from room to room easier with our Stainless Steel Carts. Skytron carts are lightweight, durable, and easy to clean with its non-porous surface. We offer a full line of stainless steel opened or closed carts that feature fully welded construction for strength and durability.

# Open Case Carts



**MMOCC16-DC**  
(shown with 3 adjustable solid shelves)

## Standard Features

- Open design
- Sturdy built cart – perfect for storage, supplies, linens, or distribution
- Full wrap around non-marring bumper
- Stainless steel guard rail
- 6" composite casters (2 swivel & 2 locking)

## Optional Features

- Adjustable solid shelf
- Adjustable perforated shelf
- Fixed top shelf
- Wire grid on back side
- 6" maintenance-free, high temp, high pressure stainless steel casters with sealed ball bearings (3 swivel & 1 fixed directional)
- Total locking casters
- 6" plastic bin
- 10" plastic bin
- Full swivel caster set

## Standard Models

Base Model #	Overall Dimensions
MMOCC13-DC	40.375"W x 29.375"D x 37.5" H
MMOCC16-DC	60.375"W x 26.125"D x 67" H
MMOCC18-DC	40.75"W x 27"D x 37" H
MMOCC19-DC	40.75"W x 30.875"D x 39" H
MMOCC21-DC	29.75"W x 29.75"D x 62" H
MMOCC24-DC	30"W x 24"D x 54" H
MMOCC25-DC	24"W x 24"D x 54" H

# Closed Case Carts



## Standard Features

- Fully welded construction
- 8.5" x 11" card holder
- Sound-proofed tops and doors for quiet operation
- Adjustable perforated roll out stainless steel shelves
- Exterior push handle for better control
- Full wrap around non-marring bumper
- Tamper evidence security tab
- Positive lock door latches
- 6" maintenance-free, high temp, high pressure stainless steel casters with sealed ball bearings (3 swivel & 1 fixed directional)

## Optional Features

- Additional adjustable solid shelf (roll out)
- Additional adjustable solid shelf (non roll out)
- Additional adjustable perforated shelf (roll out)
- Additional adjustable perforated shelf (non roll out)
- No shelves
- Side extensions
- Flag system (one each of red, yellow, and green)
- Clean/dirty indicator
- Tow hitch
- Composite directional locking casters
- Total locking casters
- Silicon door gasket for complete sterility control
- Full swivel caster set
- Wire Rack

## Standard Models

Base Model #	Case Dimensions	Overall Dimensions	Doors	Adjustable Shelves
MMCC2-2PS-SSD	28.5" W x 28.5" D x 47.25" H	34" W x 32.625" D x 56.375" H	1	2
MMCC3-1PS-SSD	40.25" W x 25" D x 30.25" H	46" W x 28.125" D x 39.375" H	2	1
MMCC4-2PS-SSD	40.25" W x 25" D x 47.25" H	46" W x 28.125" D x 56.375" H	2	2
MMCC5-2PS-SSD	36" W x 25" D x 47.25" H	41.75" W x 29.125" D x 56.375" H	2	2
MMCC6-1PS-SSD	23.625" W x 25" D x 30.5" H	29.375" W x 29.125" D x 39.625" H	1	1
MMCC7-2PS-SSD	36" W x 25" D x 44.5" H	41.75" W x 28.125" D x 53.625" H	2	2
MMCC8-1PS-SSD	23.25" W x 25" D x 28.5" H	28.75" W x 28.125" D x 37.625" H	1	1
MMCC9-2PS-SSD	23.625" W x 25" D x 46.25" H	29.375" W x 29.125" D x 55.375" H	1	2
MMCC12-1PS-SSD	36" W x 25" D x 31" H	41.75" W x 29.125" D x 40" H	2	1
MMCC14-2PS-SSD	46.5" W x 25.825" D x 31.25" H	52.25" W x 29" D x 40.25" H	2	2

Note: Additional shelving available for purchase. Shelving adjusts in 3" increments.

# Vertical Handle Case Carts

## Standard Features

- **Ergonomically friendly** vertical handles for precise control
- Fully welded construction
- 8.5" x 11" card holder
- Sound-proofed tops and doors for quiet operation
- Adjustable perforated roll out stainless steel shelves
- Full wrap around non-marring bumper
- Tamper evidence security tabs
- Positive lock door latches
- 6" maintenance-free, high temp, high pressure stainless steel casters with sealed ball bearings (3 swivel & 1 fixed directional)



## Optional Features

- Additional adjustable solid shelf (roll out)
- Additional adjustable solid shelf (non roll out)
- Additional adjustable perforated shelf (non roll out)
- No shelves
- Flag system (one each of red, yellow, and green)
- Clean/dirty indicator
- Tow hitch
- Cool touch handles
- Total locking casters
- Silicon door gasket for sterility control
- Full swivel caster set

## Standard Models

Base Model #	Case Dimensions	Overall Dimensions	Doors	Adjustable Shelves
MMCV95-2PS-SSD	36.25" W x 26.5" D x 40.75" H	48.25" W x 27.75" D x 53" H	2	2
MMCV107-2PS-SSD	40" W x 24.75" D x 38.75" H	48.75" W x 26" D x 51" H	2	2

*Note: Additional shelving available for purchase. Shelving adjusts in 3" increments.*





## Stainless Steel Stands

Keep your instruments close at reach during a procedure with Skytron's lightweight and easily transportable stainless steel stands. We offer a full line of stainless steel stands including Solution Stands, IV Stands, Linen Hampers, and Mayo Stands.

# IV Stands

## Standard Features

- Stainless steel construction
- Height adjustment range: 68"—108"
- Tip resistant base
- 2" swivel casters



## IVS-1000 Series

- Hand operated
- 5-leg stand
- Welded base

**IVS-1002**  
• Two hook design

**IVS-1004**  
• Four hook design

**IVS-1006**  
• Six hook design



## IVS-2000 Series

- Hand operated
- 4-leg stand
- Welded base

**IVS-2002**  
• Two hook design

**IVS-2004**  
• Four hook design

**IVS-2006**  
• Six hook design



## IVS-3000 Series

- Foot operated
- 5-leg stand
- Welded base

**IVS-3002**  
• Two hook design

**IVS-3004**  
• Four hook design

**IVS-3006**  
• Six hook design



## IVS-4000 Series

- Foot operated
- 4-leg stand
- Welded base

**IVS-4002**  
• Two hook design

**IVS-4004**  
• Four hook design

**IVS-4006**  
• Six hook design



## IVS-8000 Series

- Foot operated
- 6-leg stand
- Welded Base

**IVS-8002**  
• Two hook design

**IVS-8004**  
• Four hook design

**IVS-8006**  
• Six hook design

## Knock Down Versions

(Assembly Required)



## IVS-5000 Series

- Hand operated
- 4-leg stand

**IVS-5002**  
• Two hook design

**IVS-5004**  
• Four hook design

**IVS-5006**  
• Six hook design



## IVS-6000 Series

- Hand operated
- 6-leg stand

**IVS-6002**  
• Two hook design

**IVS-6004**  
• Four hook design

**IVS-6006**  
• Six hook design



## IVS-7000 Series

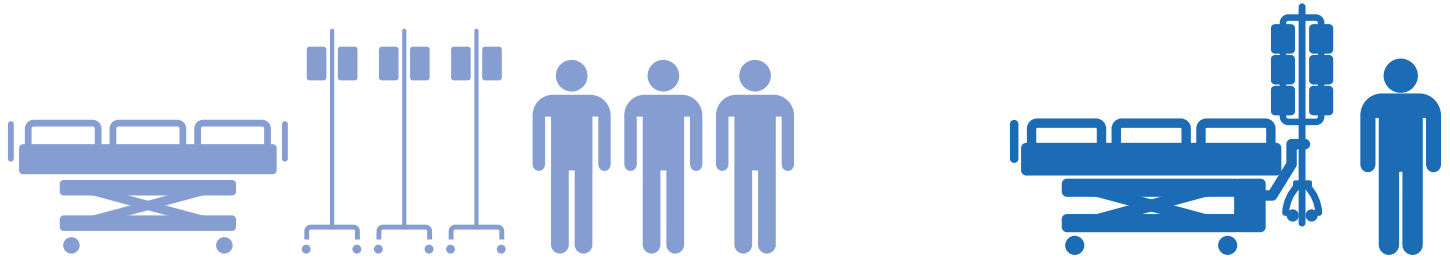
- Hand operated
- 5-leg stand

**IVS-7002**  
• Two hook design

**IVS-7004**  
• Four hook design

**IVS-7006**  
• Six hook design

# Streamline™ IV Suspension System



FROM THIS

TO THIS

- Patient transport requires up to three or more caregivers and often multiple IV poles to manage patient equipment.

- One Caregiver
- One Infusion Suspension System
- Safe, Fast, Efficient



In seconds, the IV Suspension System can go from an infusion stand to a suspended, securely locked part of any bed or stretcher.

## New Thinking Solves Age-old Patient Transport Problem

Streamline Pole – Instantly connects to a patient's bed. The base and legs rise off the floor with the push of a foot pedal for smooth, hands-free transport over uneven floors, elevator thresholds, etc.

The Articulating Bed Mount – Secures the Streamline pole to the bed, freeing attendants' hands for faster, safer maneuvering around tight spaces and corners. The mount's 180-degree swing allows for multiple transport positions.

Contact your local distributor for more info or how to order Streamline

# Linen Hampers

## Standard Features

- Fully welded, heavy gauge all stainless steel construction
- Heavy gauge stainless steel platform to support bags and ease of removal
- 2" swivel casters
- Foot operated stainless steel lid (for FOL models only)

## Optional Features

- Rotating bumper guards over casters



### LH-1000

- Overall dimensions: 35" H x 57 1/4" perimeter
- Accommodates 18" diameter bags

### LH-1000-FOL

- Includes Lid



### LH-1001

- Overall dimensions: 35" H x 78 5/8" perimeter
- Accommodates 25" diameter bags

### LH-1001-FOL

- Includes Lid



### LH-2000

- Overall dimensions: 35" H x 18" diameter
- Accommodates 18" diameter bags

### LH-2000-FOL

- Includes Lid



### LH-2001

- Overall dimensions: 35" H x 25" diameter
- Accommodates 25" diameter bags

### LH-2001-FOL

- Includes Lid

# Solution Stands

## Standard Features

- Fully welded stainless steel construction
- Single and double basin designs available
- Open frame design allows accessibility from any side
- 2" swivel casters



### SOL-1000

- Overall Dimensions:  
14" W x 14" D x 34" H
- Removable 7 quart stainless steel basin

### SOL-1000-8.5

- 9 1/2 quart basin



### SOL-1001

- Same as SOL-1000 except with stainless steel lower shelf
- Removable 7 quart stainless steel basin

### SOL-1001-8.5

- 9 1/2 quart basin



### SOL-2000

- Overall Dimensions:  
28" W x 14" D x 34" H
- Two removable 7 quart stainless steel basins

### SOL-2000-8.5

- 9 1/2 quart basins



### SOL-2001

- Same as SOL-2000 except with stainless steel lower shelf
- Two removable 7 quart stainless steel basins

### SOL-2001-8.5

- 9 1/2 quart basins

# Mayo Stands

## Standard Features

- Full welded stainless steel construction
- Height adjustment range: 36"—58"
- 2" swivel casters

## Optional Features

- Mobile base

50  
POUND  
Weight  
Capacity



### MYO-2000

- Removable 21 1/4" x 16 1/4" stainless steel tray
- Foot operated friction lock height adjustment/dual post

### MYO-2001

- Same as MYO-2000 except 19 1/8" x 12 5/8" stainless steel tray

### MYO-2002

- Same as MYO-2000 except 25" x 20" stainless steel tray

50  
POUND  
Weight  
Capacity



### MYO-3000

- Removable 21 1/4" x 16 1/4" stainless steel tray
- Hand operated friction lock height adjustment/dual post

### MYO-3001

- Same as MYO-3000 except 19 1/8" x 12 5/8" stainless steel tray

### MYO-3002

- Same as MYO-3000 except 25" x 20" stainless steel tray

40  
POUND  
Weight  
Capacity



### MYO-4000

- Removable 21 1/4" x 16 1/4" stainless steel tray
- Manual knob operated adjustment/single post

### MYO-4001

- Same as MYO-4000 except 19 1/8" x 12 5/8" stainless steel tray



Optional mobile  
base available  
for all models

40  
POUND  
Weight  
Capacity



### MYO-5000

- Removable 21 1/4" x 16 1/4" stainless steel tray
- Foot operated friction lock height adjustment/single post

### MYO-5001

- Same as MYO-5000 except 19 1/8" x 12 5/8" stainless steel tray





## Other Stainless Steel Products

Big or small we have got you covered, our extensive portfolio of stainless products are durable to withstand continued use for years to come. Skytron's variety of stainless products include Kick Buckets, Step Stools, Pass-Through Windows, and Peg Boards to fit your unique needs.

# Kick Buckets

## Standard Features

- Stainless steel frame
- Perimeter bumper to protect walls
- Tip resistant
- 2" swivel casters



### KB-1000

- Overall dimensions: 14" H x 13 1/2" diameter
- Removable 13 quart stainless steel basin



### KB-2000

- Overall dimensions: 8" H x 16 1/4" diameter
- Removable 9 1/2 quart stainless steel basin

# Step Stools

## Standard Features

- Heavy duty, stainless steel construction
- Single step stools are stackable
- Single step stools connect together to create a large platform
- Corrugated, black rubber top surface on each stool
- Tip resistant
- Rubber floor tips



## Standard Models

## Optional Features

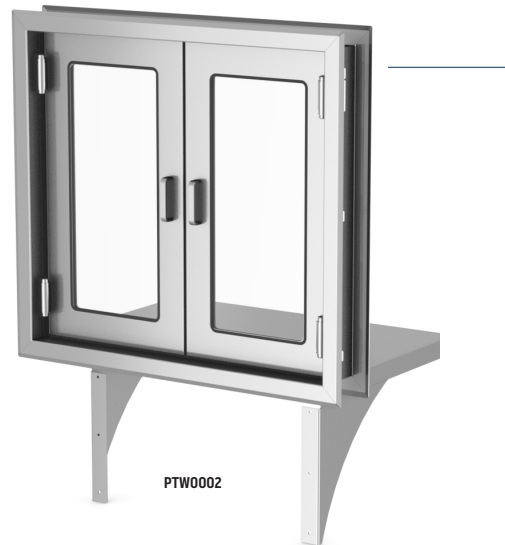
- Easy roll around transport cart with 4 swiveling casters (2 locking)
  - holds up to 5 step stools
  - only available for STS121805

Model #	Overall Dimensions
STS121805 (single step)	18" W x 12" D x 5.25" H
T0800 (optional transport cart)	20" W x 19" D x 35" H
STS263015 (two steps)	30" W x 26" D x 15" H
STS121808-HD (with handle)	18" W x 12" D x 5.25" H

# Pass Through Windows

## Standard Features

- 3/16" tempered glass
- Adjustable width for wall thickness (between 4"–6")
- Standard shelf
- Dual swing hinge with adjustable spring tension



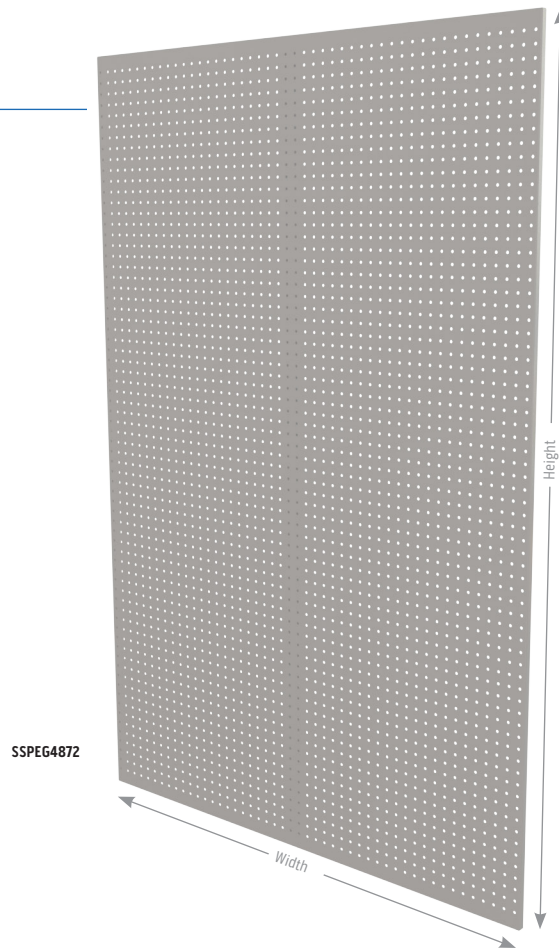
## Standard Models

Base Model #	Outside Dimensions
PTW0001	37.5" W x 34.5" L (no shelf)
PTW0002	37.5" W x 34.5" L (shelf included)
PTW0003	24" W x 34.5" L (no shelf)

# Peg Boards

## Standard Features

- Stainless steel construction
- 1/4" diameter holes on 1" center
- Key hole slots for mounting (mounting hardware not included)



## Standard Models

Model #	Overall Dimensions
SSPEG2436	24" W x 36" H
SSPEG3636	36" W x 36" H
SPEG3648	36" W x 48" H
SPEG4248	42" W x 48" H
SPEG4848	48" W x 48" H
SPEG4872	48" W x 72" H
SPEG4896	48" W x 96" H

## Standard Hooks

Model #	Hook Size
IC0128-01	3-3/32" stainless steel single peg board hook (fits 3/16" & 1/4" diameter holes)
IC0128-02	5-3/16" stainless steel single peg board hook (fits 3/16" & 1/4" diameter holes)
IC0128-03	8-3/4" stainless steel single peg board hook (fits 3/16" & 1/4" diameter holes)
IC0901	8" stainless steel single peg board hook (fits 1/4" diameter holes)
IC0128-05	9" stainless steel single peg board hook (fits 1/4" diameter holes)

*Note: All hooks are compatible with all peg board models, and are sold separately.*





# Magnetic Resonance Compatible Products

Skytron offers products that can safely equip your MRI suites. The sturdy, low maintenance stainless steel construction allows our products to be placed in any magnetic resonance environment.

# Magnetic Resonance Compatible Mayo Stands

## Standard Features

- Equipped for any magnetic resonance environment
- Full welded stainless steel construction
- Height adjustment range: 36"–58"
- 2" swivel casters



### MYO-4001-MRI

- Removable 19 1/8" x 12 5/8" stainless steel tray
- Manual knob operated adjustment/single post

## Optional Features

- Mobile base



# Magnetic Resonance Compatible Solution Stands

## Standard Features

- Equipped for any magnetic resonance environment
- Fully welded stainless steel construction
- Stainless steel lower shelf
- Open frame design allows accessibility from any side
- 2" swivel casters



### SOL-1001-MRI

- Overall Dimensions: 14" W x 14" D x 34" H
- Removable 7 quart stainless steel basin

### SOL-1001-8.5-MRI

- 9 1/2 quart basin



### SOL-2001-MRI

- Overall Dimensions: 28" W x 14" D x 34" H
- Two removable 7 quart stainless steel basin

### SOL-2001-8.5-MRI

- 9 1/2 quart basins



# Magnetic Resonance Compatible Kick Buckets

## Standard Features

- Equipped for any magnetic resonance environment
- Stainless steel frame
- Perimeter bumper to protect walls
- Tip resistant
- 2" swivel casters



### KB-1000-MRI

- Overall dimensions: 14" H x 13 1/2" diameter
- Removable 13 quart stainless steel basin



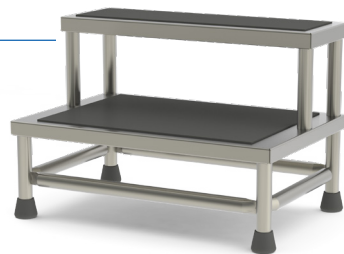
### KB-2000-MRI

- Overall dimensions: 8" H x 16 1/4" diameter
- Removable 9 1/2 quart stainless steel basin

# Magnetic Resonance Compatible Step Stools

## Standard Features

- Equipped for any magnetic resonance environment
- Heavy duty, stainless steel construction
- Single step stools are stackable
- Single step stools connect together to create a large platform
- Corrugated, black rubber top surface on each stool
- Tip resistant
- Rubber floor tips



STS263015-MRI

### Standard Models

Model #	Overall Dimensions
STS121805-MRI (single step)	18" W x 12" D x 5.25" H
STS263015-MRI (two steps)	30" W x 26" D x 15" H

# Magnetic Resonance Compatible Linen Hampers

---

## Standard Features

- Equipped for any magnetic resonance environment
- Fully welded, heavy gauge all stainless steel construction
- Heavy gauge stainless steel platform to support bags and ease of removal
- 2" swivel casters
- Foot operated stainless steel lid (for FOL models only)

## Optional Features

- Rotating bumper guards over casters



### LH-1000-MRI

- Overall dimensions:  
35" H x 57 1/4" perimeter
- Accommodates 18" diameter bags

### LH-1000-MRI-FOL

- Includes Lid



### LH-1001-MRI

- Overall dimensions:  
35" H x 78 5/8" perimeter
- Accommodates 25" diameter bags

### LH-1001-MRI-FOL

- Includes Lid



### LH-2000-MRI

- Overall dimensions:  
35" H x 18" diameter
- Accommodates 18" diameter bags

### LH-2000-MRI-FOL

- Includes Lid



### LH-2001-MRI

- Overall dimensions:  
35" H x 25" diameter
- Accommodates 25" diameter bags

### LH-2001-MRI-FOL

- Includes Lid

# Magnetic Resonance Compatible Instrument Tables

## Standard Features

- Equipped for any magnetic resonance environment
- Fully welded construction
- Reinforced tops
- Stainless steel legs (1 1/4" 16 gauge)
- Stainless steel top (16 gauge type 300 series)
- Stainless steel under shelf (18 gauge type 300 series)
- 2" swivel casters

## Optional Features

- 3" swivel casters
- Locking casters
- Drawers under all sizes
- Guard rails on 3 sides (available on top or bottom shelf)
- H or U brace instead of under shelf
- 1" lip on back



## Standard MR Models

Base Model #	Overall Dimensions
T0001-MRI	20"W x 16"D x 34" H
T0002-MRI	30"W x 16"D x 34" H
T0003-MRI	36"W x 24"D x 34" H
T0004-MRI	48"W x 24"D x 34" H
T0005-MRI	60"W x 24"D x 34" H
T0006-MRI	72"W x 24"D x 34" H
T0049-MRI	48"W x 20"D x 34" H
T0053-MRI	30"W x 28"D x 34" H
T0054-MRI	72"W x 30"D x 34" H
T0058-MRI	36"W x 20"D x 34" H
T0059-MRI	60"W x 30"D x 34" H
T0088-MRI	33"W x 18"D x 34" H
T0101-MRI	36"W x 30"D x 34" H
T0115-MRI	20" W x 20" D x 34" H

# Magnetic Resonance Compatible IV Stands

---

## Standard Features

- Equipped for any magnetic resonance environment
- Stainless steel construction
- Height adjustment range: 68"–108"
- Knock down version (assembly required)
- Hand operated
- Tip resistant base
- 2" swivel casters



## IVS-5002-MRI

- Two hook design
- 4 leg stand

## IVS-5004-MRI

- Four hook design
- 4 leg stand



## IVS-7002-MRI

- Two hook design
- 5 leg stand

## IVS-7004-MRI

- Four hook design
- 5 leg stand



## Stainless Steel Storage Cabinets

Eliminate clutter and gain valuable floor space while enjoying convenient access to the supplies required for patient care. We bring ease, simplicity, and organization to any healthcare space with a diverse line of storage cabinets. From supply cabinets to desk consoles, Skytron storage solutions are fully customizable and can adapt to a variety of clinical environments.

# Stainless Steel Storage Cabinets



## Supply

- Freestanding, recessed or pass-through
- One to five shelves
- Catheter management hooks available
- Optional door locks



## Accessory

- Freestanding or recessed
- Additional hooks available
- Catheter management hooks available
- Optional door locks

## Standard Models

Base Model #	Type	Configuration	Available Widths	Available Depths	Available Heights
FSSC-SD	Supply Cabinet	Freestanding, Single Door	24"	18", 24"	81", 84", 92"
RSSC-SD	Supply Cabinet	Recessed, Single Door	24"	18", 24"	60", 72", 80"
PTSSC-SD	Supply Cabinet	Pass-Through, Single Door	24"	18", 24"	60", 72", 80"
FSSC-DD	Supply Cabinet	Freestanding, Double Door	30", 36", 42", 48"	18", 24"	81", 84", 92"
RSSC-DD	Supply Cabinet	Recessed, Double Door	30", 36", 42", 48"	18", 24"	60", 72", 80"
PTSSC-DD	Supply Cabinet	Pass-Through, Double Door	24", 30", 36", 42", 48"	18", 24"	60", 72", 80"
FSTC	Accessory Cabinet	Freestanding, Double Door	30", 36", 42", 48"	18", 24"	81", 84", 92"
RSTC	Accessory Cabinet	Recessed, Double Door	30", 36", 42", 48"	18", 24"	60", 72", 80"



# Stainless Steel Storage Cabinets



## Combo

- Freestanding or recessed
- One to three shelves
- Double-pan, stainless drawers
- Optional door or drawer locks



## Desk Console

- Freestanding or recessed
- Magnetic bulletin board
- Ceiling-mounted light fixture
- Optional drawer locks

### Standard Models

Base Model #	Type	Configuration	Available Widths	Available Depths	Available Heights
FSDC	Desk Console	Freestanding	24"	18", 24"	81", 84", 92"
RSDC	Desk Console	Recessed	24"	18", 24"	60", 72", 80"
FSGC	Combo Cabinet	Freestanding	24", 30", 36"	18", 24"	81", 84", 92"
RSGC	Combo Cabinet	Recessed	24", 30", 36"	18", 24"	60", 72", 80"

# Skytron's Solutions



## Sterile Processing

Processing Sinks and Stainless Offerings  
Washers, Ultrasonics, and Cart Washers  
Prep & Pack Tables & Sterilizers



## Clinical

Surgical Tables  
Booms & Lights  
Full Offering of Stainless Products



## Architectural & Environmental

Modular Walls  
Custom Window and Door Offering  
UVC Disinfection Products



## Clinical Business Intelligence

Video Integration  
Asset Tracking & Supply Chain Solutions  
Surgical Displays

Skytron provides safe and efficient healthcare solutions delivered through a local representative network that values long-term relationships and comprehensive service.

Focused on providing the highest quality solutions while delivering the lowest cost of ownership, we prioritize transparency and accountability in our actions.

**To learn more, visit our website at [www.skytron.com](http://www.skytron.com)**



5085 Corporate Exchange Blvd. SE  
Grand Rapids, MI 49512  
1.800.SKYTRON (759-8766)  
email: [info@skytron.com](mailto:info@skytron.com)  
[www.skytron.com](http://www.skytron.com)



REV11 05-23  
PN L2-010-148